

BASCO

Buildings Automation Systems

Importer : Ekinler Endüstri San. ve Tic. A.Ş.

Address : İkitelli Organizasyon Sanayi Bölgesi 1.Tümsan Sanayi Sitesi

8.Blok No:22 Başakşehir/İSTANBUL

Tel : +90 212 485 49 58

Fax : +90 212 485 09 57

Web : www.basco.tech

E-mail : info@basco.tech

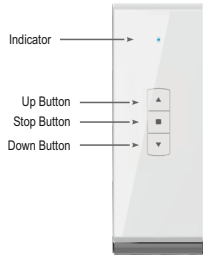


Remote Controller

1 Remote Controller Features

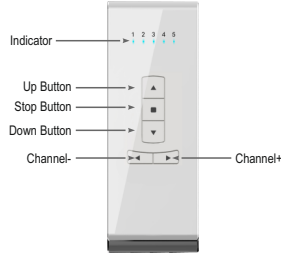
CE0197

- When the control distance become short or the sensitivity reduced, we need to change the battery in time
- Damp, exposure, collisions will affect the lifespan of the emitter



PCE00-010

1 Channel Remote Controller



PCE00-050

5 Channel Remote Controller



PCE00-150

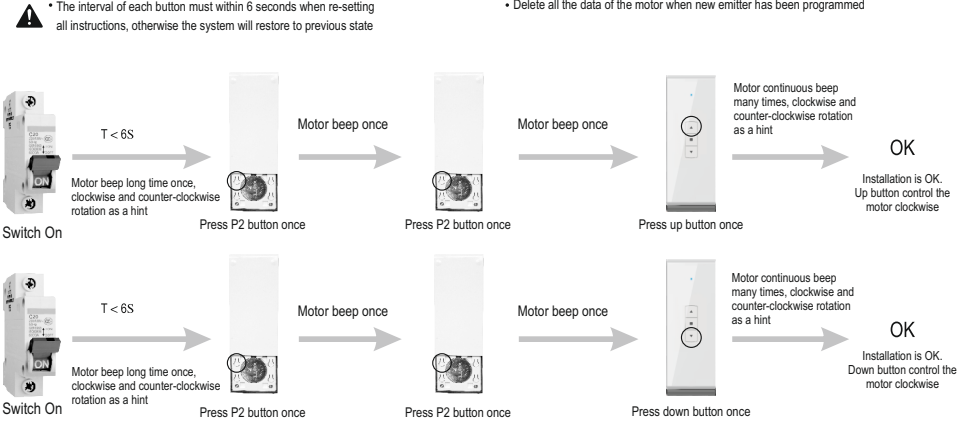
15 Channel Remote Controller



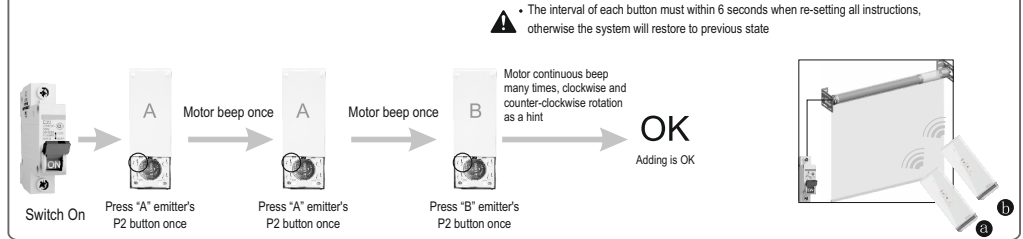
Input Voltage : 3V (CR2430)
Transmitting Frequency : 433.92MHz±100KHz
Transmitting Power : 10mW
Operating Temperature : -20°C~+55°C
Transmission Distance : 200 metres open area
35 metres on two walls

- When all lights on the 5-Channel remote controller light, the remote controller is in group control
- The LCD screen on 15-Channel remote controller show "0", the remote controller is in group control

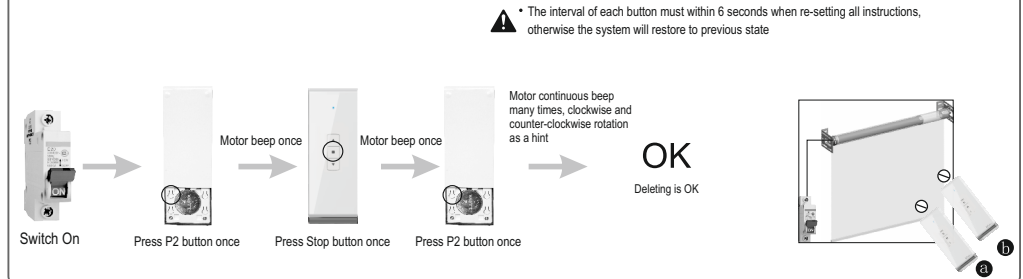
2 Remote Controller Installation Instruction



3 Adding Remote Controller



4 Deleting All Remote Controllers



5 Dot-Move Setting Instruction

