

BASCO

CURTAIN MOTORS

**ORIGINAL USER
MANUAL**

Contents

1. Product Introduction	3
2. Label Introduction.....	3
3. Installation Instruction	5
4. Cable Connection Instruction	6
5. Problems and Solutions.....	6
6. Warranty Conditions	8

This manual applies to the following products;

- PMC00-00B, PMC00-01B

- PMC01-00B, PMC01-01B



For security, instructions must be followed on an individual basis. Please keep instructions.



These instructions are also available on the website.



The additional components required for installation come from within the product.



Installation should be done by experts.



Maintenance is not required.



Sound power level < 70dBA



Do not allow children to use.



It must not be used by persons (including children) who have physical or mental discomfort.



It can be used by children over the age of 8 and persons with physical or mental disabilities who are informed about the safe use of the device and the related hazard situations.



During installation, the imbalance, wears, or damage to the cables and springs must be checked. If repair or adjustment is necessary, it must not be used.

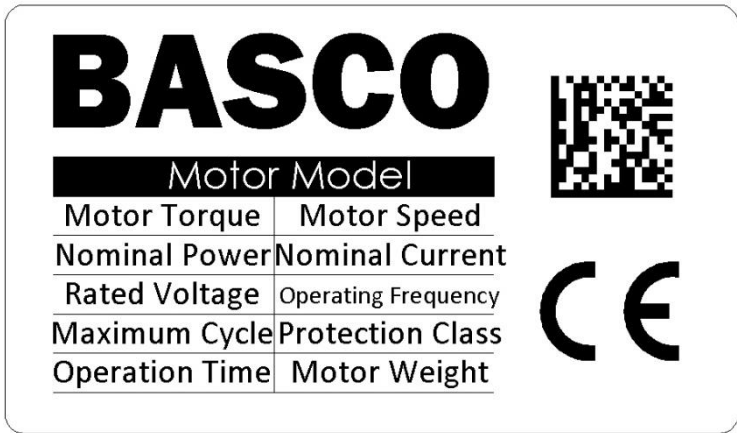


The cleaning and maintenance of the appliance must not be done by children.




1. Product Introduction

Curtain Motors consist of AC Motor or DC Motor, Gearbox, Capacitor, Receiver, Thermal Protection, Power Cable and Micro Switch. They used for drapery curtains and roof curtains.

2. Label Introduction

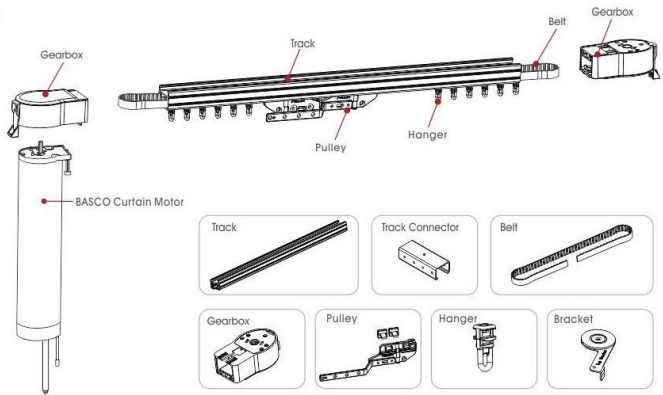


- 2.1. **Motor Model:** It is the expression of the motor model number.
- 2.2. **Motor Torque:** It is the expression of the motor lifting capacity in “Newton Meter”.
- 2.3. **Motor Speed:** It is the expression of the number of laps the motor makes per minute in “rpm”.
- 2.4. **Nominal Power:** It is the expression of the power drawn from the network by a motor operating at full load at rated voltage and working frequency in “Watt”.

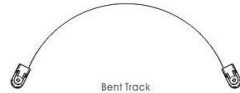
- 2.5. Nominal Current:** It is the expression of the current drawn from the network by a motor operating at full load at rated voltage and operating frequency in “Ampere”.
- 2.6. Rated Voltage:** It is the expression of the voltage of the network that the motor will take its energy in “Volt”.
-  The motor must not be connected to a network with a voltage that is different from the rating voltage.
- 2.7. Operating Frequency:** It is the expression of the operating frequency of the motor in “Hertz”.
- 2.8. Maximum Cycle:** It is the expression of the maximum number of laps the motor can make in one direction.
-  In applications where the usage height is high, it is a feature that should be considered in terms of sufficiency.
- 2.9. Protection Class:** It is the expression of the ability of the motor to protect against granulated and water.
- 2.10. Operation Time:** It specifies the maximum time the motor can run without stopping.
-  When this time is exceeded, the thermal protection in the motor becomes active and protects the motor against overheating. It takes 20 minutes to run the motor again.
- 2.11. Motor Weight:** It is expression of the weight of the motor in “kg”.

3. Installation Instruction

System Structure



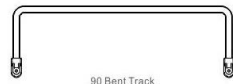
Straight Track



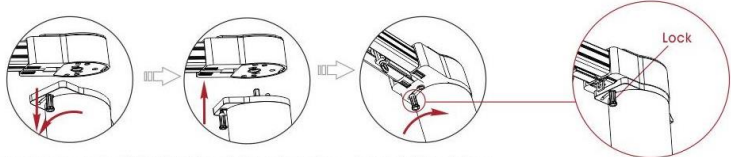
Bent Track



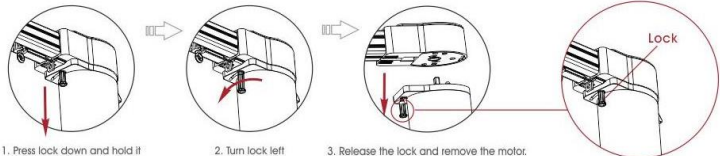
Trapezoid Bent Track



90 Bent Track



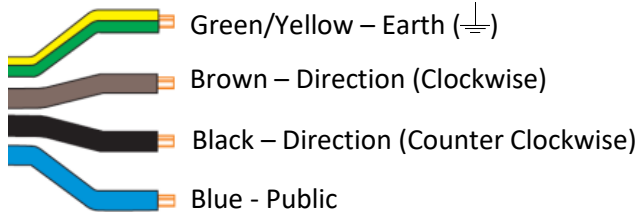
1. Press lock down and turn it left
2. Insert the motor into master gearbox
3. Turn lock right and release it to well fit the motor into the gearbox



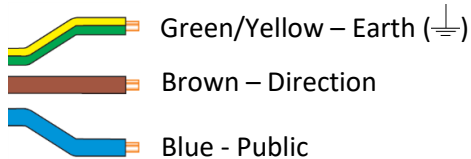
1. Press lock down and hold it
2. Turn lock left
3. Release the lock and remove the motor.

4. Cable Connection Instruction

4.1. Standard and Manual Motor



Receiver and Electronic Motor



5. Problems and Solutions

5.1. After the power is applied to the system, the motor does not move when the controller is pressed

- 5.1.1. The controller may not work. In this case, the remote controller's battery must be replaced.
- 5.1.2. The controller and receiver may not be matched. In this case, the matching operation must be done with the help of the user manual given to the controller.

5.2. When any one of the direction buttons of the controller is pressed, the system moves in the opposite direction of the pressed button

- 5.2.1. Cable connections may be reversed. In this case, the connection points of brown and black cables should be changed.

5.3. After power is applied to the system, the system can only move in one direction

5.3.1. The key to the other movement can be switched off. In this case, the crown must be rotated in the direction of rotation of the drive adapter.

5.4. Motor is not working or slow running after power is applied to the system

5.4.1. The line voltage may be low. In this case, the line voltage must be set to the rated voltage.

5.4.2. Cables could be a problem. In this case the cables should be checked.

5.4.3. The system may be loaded with more load than the motor can lift. In this case, according to the "Technical Support" section of the catalog, torque balance must be made and the amount of load must be regulated.

5.4.4. The assembly may have been made incorrectly. In this case, the installation of the system should be done again.

5.5. Non-stop operation of the system, and not stopping at set limits

5.5.1. The drive adapter may not be properly secured. In this case, the drive adapter and the aluminum tube should be fixed correctly with each other.

5.5.2. The drive adapter may be pierced. In this case the drive adapter must be replaced.

5.6. Motor sudden stop when system is running

5.6.1. The motor has been running continuously for a longer period of time than indicated on the label and may have been subjected to thermal protection to avoid damage. In this case, the motor must be cooled for at least 20 minutes before starting again.

5.7. Motor shutdown while the system is running and the limit position cannot be increased in the current operating direction

5.7.1. The range of the motor's limit positions may have reached the maximum point. In this case, the motor must be removed from the tube and the crown on the motor should be rotated a few turns in the opposite direction of the current operating direction. Then the motor can be remounted and the limit position can be adjusted.

6. Warranty Conditions

6.1. The warranty period starts from the date of delivery and is 2 years.

6.2. Including all parts of the good, provided that it has not been tampered with by maintenance, repair or other reasons by persons other than the practicing and using person in a manner not incompatible with the material contained in the manual for use of the goods; Material, workmanship and production defects for the period specified above from the date of delivery of the goods.

- 6.3. In the event of malfunction within the guarantee period, the fault must be reported to the practitioner. The repair period is maximum 20 working days. This period begins from the date of the application notification of the malfunction related to the goods.
- 6.4. The responsibility of giving the warranty certificate to the consumer is the responsibility of the authorized dealer or practitioner to whom the consumer purchases the goods.
- 6.5. Warranty is invalid if the original barcode on the product is tampered with. The warranty period will be monitored from the barcode.
- 6.6. **The defective device will not be covered under the following conditions:**
 - 6.6.1. Defects from external equipment connected to the device (regulator, uninterruptible power supply, etc.)
 - 6.6.2. Malfunctions due to abnormal voltage drop or excess, faulty electrical installation, connection to a different mains voltage specified on the device label,
 - 6.6.3. Defects that may occur after the delivery of the goods and after the placement (drop, excessive shock, impact etc.)
 - 6.6.4. Distortion, scratches, breaks and defects on the outer and inner surfaces which are caused by the usage mistakes of the device.

WARRANTY DOCUMENT

Product

Model and Quantity _____

Dealer

Name _____

Address _____

Tel _____

Stamp & Signature

Customer

Name _____

Address _____

Tel _____

BASCO

Building Automation Systems

Importer: Ekinler Endüstri San. ve Tic. A.Ş.

Address : İkitelli Organizasyon Sanayi Bölgesi 1.Tümsan Sanayi Sitesi
8.Blok No:22 Başakşehir/İSTANBUL

Tel : +90 212 485 49 58

Fax : +90 212 485 09 57

Web : www.basco.tech

E-mail : info@basco.tech