

# BASCO

## Buildings Automation Systems

Importer : Ekinler Endüstri San. ve Tic. A.Ş.  
Address : İkitelli Organizasyon Sanayi Bölgesi 1.Tümsan Sanayi Sitesi  
8.Blok No:22 Başakşehir/İSTANBUL  
Tel : +90 212 485 49 58  
Fax : +90 212 485 09 57  
Web : www.basco.tech  
E-mail : info@basco.tech



Remote Controller

## 1 Remote Controller Features

CE0197



PCE02-010

1 Channel Remote Controller

- When the control distance become short or the sensitivity reduced, we need to change the battery in time
- Damp, exposure, collisions will affect the lifespan of the emitter



Up  
Button



Down  
Button



Stop  
Button



Lock  
Button

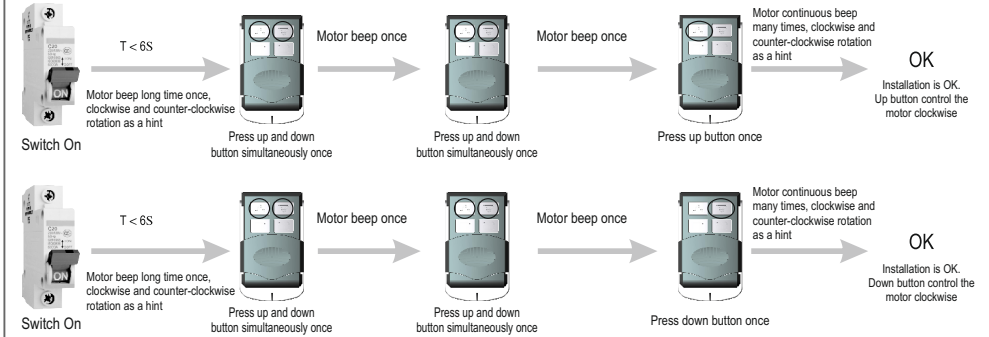
Input Voltage : 27A 12V  
Transmitting Frequency : 433.92MHz±100KHz  
Transmitting Power : 10mW  
Operating Temperature : -20°C~+55°C  
Transmission Distance : 200 metres open area  
35 metres on two walls

## 2 Remote Controller Installation Instruction



• The interval of each button must within 6 seconds when re-setting all instructions, otherwise the system will restore to previous state

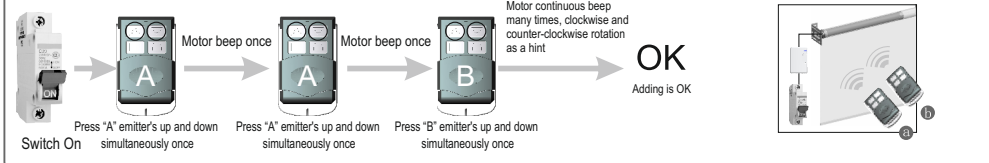
• Delete all the data of the motor when new emitter has been programmed



## 3 Adding Remote Controller



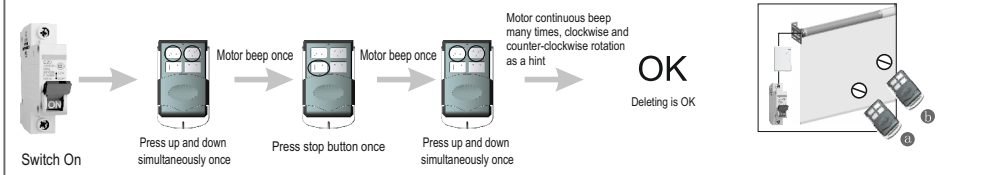
• The interval of each button must within 6 seconds when re-setting all instructions, otherwise the system will restore to previous state



## 4 Deleting All Remote Controllers



• The interval of each button must within 6 seconds when re-setting all instructions, otherwise the system will restore to previous state



## 5 Dot-Move Setting Instruction



Repeat this setting, the dot-move function is cancelled



• The interval of each button must within 6 seconds when re-setting all instructions, otherwise the system will restore to previous state

